



HINCKLEY
RUNNING CLUB

DERBY RUNNER CROSS-COUNTRY LEAGUE 2022/23 (RACE 5)

BOSWORTH BATTLEFIELD HERITAGE CENTRE 5th March 2023

Race Licence Number: CC2023/0739

Location

Bosworth Battlefield Heritage Centre, Ambion Lane, Sutton Cheney, Nuneaton CV13 0AD.

Directions

A447 from Coalville to Hinckley take a right turn to Sutton Cheney.
A447 from Hinckley to Market Bosworth take a left turn to Sutton Cheney.

Parking

CAR SHARING ESSENTIAL – 3 OR MORE TO A CAR PLEASE!

We have been granted permission to use designated sections of the car park and are not allowed into any other areas. Once this is full **ALL** cars will be expected to park on the field. Please note – there is a designated disabled parking area available to use.

There is **NO** parking charge – this is included in the adult race fee.

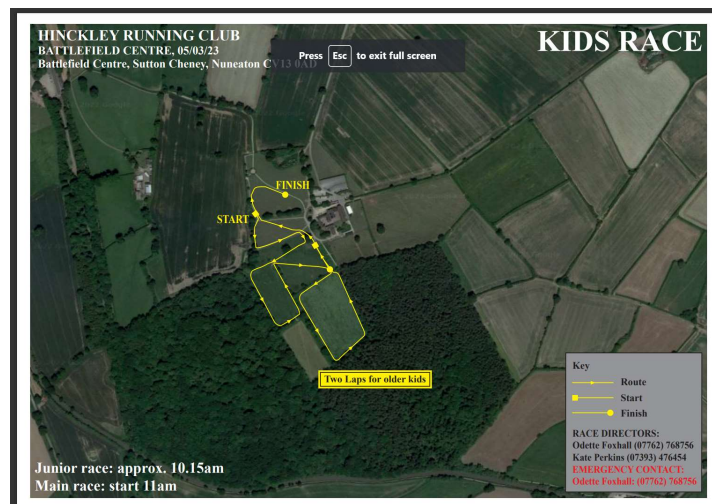
Course

Junior race: 10.15am – PLEASE NOTE THE EARLIER START TIME!

School years 3 to 6 – 1 lap – 1 mile

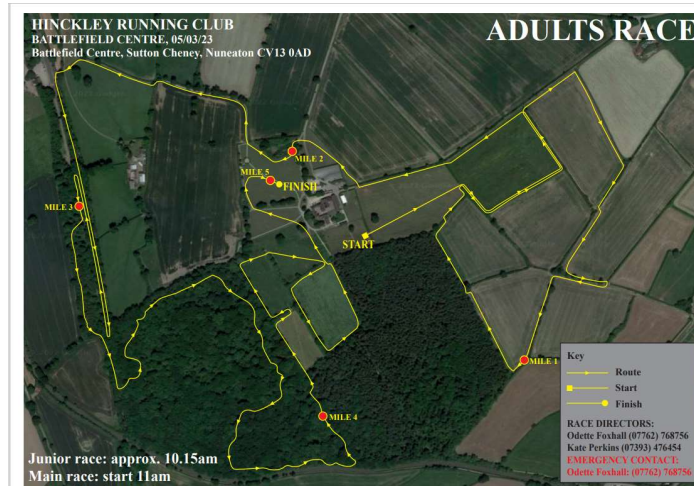
School years 7 to 12 – 2 laps – 2 miles

Entry Fee: £2 per person



Adult Race: 11am (This will **NOT** be a split start race so please be aware of this) 5.1 miles approximately. The course is a mixture of fields, track, muddy trails and woods with wet areas. There are 2 small tarmac sections back up by the car park and numerous tree stumps, roots and a few fallen trees in the woods.

Entry Fee: £7 per person



Footwear

Spikes, or trail shoes – however please note the course includes sections of hard gravel track.

Toilets

Toilets are available in the Battlefield Heritage Centre – cardboard will be put down to maintain cleanliness – however please be courteous to Battlefield Centre visitors and do not use these if you are very muddy! Please do NOT use the toilets opposite the restaurant – this is at the request of the Battlefield Centre. 3 x Portaloos will also be available on the field near the tent and finish area.

Changing Facilities

None

Tents

There will be a designated area for club tents next to the finish area.

Refreshments

Available at The Tithe Barn restaurant in the Battlefield Heritage Centre.

Dogs

Well behaved dogs are welcome; however please do not take them on the parts of the course away from public footpaths or Battlefield Centre paths, as this is private land.

Post-Race Venue

After Race Venue and results with room for approx 50-70 people at:

The New Plough Inn, 24 Leicester Road, Hinckley, Leicestershire LE10 1LS – 8 miles from race event,

Parking at St Peter's Catholic Church opposite – **please use the overflow car park** – go left past the Mary Forryan building.

Contacts:

Emergency contact on the day:

Odette Foxall – 07762 768756

Organisers:

Chris Langham – 07870 980987

Kate Perkins – 07393 476454

Please do NOT use these numbers on the day – we will be running!

Please Note:

All runners enter at their own risk. The organizers will in no way be held responsible for any loss or damage to property or for any injury incurred.

Run with kind permission of Bosworth Battlefield Heritage Centre and the landowner.
